



CHARLES VILLAGE COMMUNITY BENEFITS DISTRICT
"Keeping Charles Village Safe and Clean"

Executive Director's Report

January 2017

(For the period December 1 - 31 2016)

SAFETY SERVICES

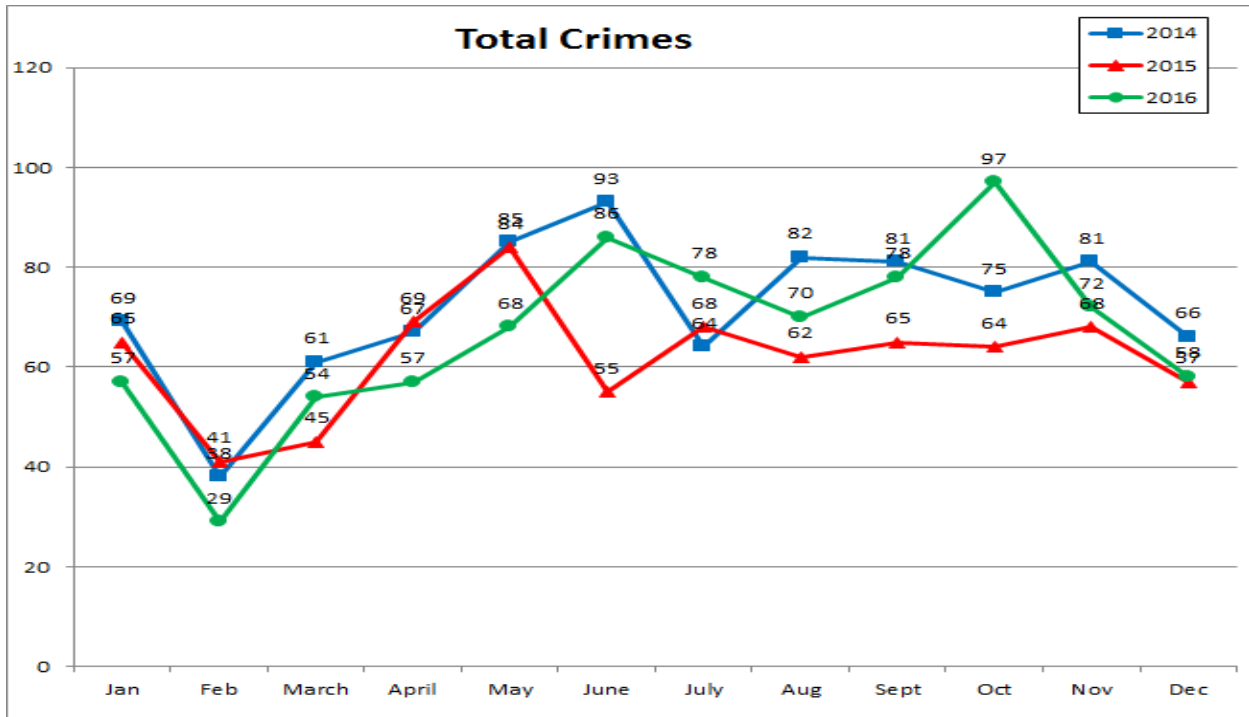
Crime Data Comparison 2015 and 2016: City, ND, CVCBD, Charles St. (December only)

Crimes	Citywide December 2016			Northern District December 2016			CVCBD December 2016			Charles St., 20th-27th December 2016			Goldseker (Zone #3) December 2016		
	2016	2015	% change	2016	2015	% change	2016	2015	% change	2016	2015	% change	2016	2015	% change
Arson	27	23	17.39%	0	2	-100.00%	0	0	0.00%	0	0	0.00%	0	0	0.00%
Assault	446	396	12.63%	20	38	-47.37%	5	4	25.00%	1	1	0.00%	0	1	-100.00%
Auto Theft	432	396	9.09%	31	36	-13.89%	3	4	-25.00%	0	0	0.00%	2	0	Cannot be calculated
Burglary	776	842	-7.84%	156	121	28.93%	12	12	0.00%	3	0	Cannot be calculated	1	0	Cannot be calculated
Homicide	33	35	-5.71%	2	3	-33.33%	1	1	0.00%	0	0	0.00%	1	1	0.00%
Larceny	990	951	4.10%	127	129	-1.55%	17	9	88.89%	2	1	100.00%	2	0	Cannot be calculated
LFA	601	630	-4.60%	94	61	54.10%	9	4	125.00%	0	0	0.00%	1	1	0.00%
Rape	20	26	-23.08%	5	4	25.00%	0	0	0.00%	0	0	0.00%	0	0	0.00%
Robbery	578	535	8.04%	78	60	30.00%	11	23	-52.17%	2	2	0.00%	0	3	-100.00%
Shooting	60	51	17.65%	3	4	-25.00%	0	0	0.00%	0	0	0.00%	0	0	0.00%
Crimes Against Persons	1137	1043	9.01%	108	109	-0.92%	17	28	-39.29%	3	3	0.00%	1	5	-80.00%
Crimes Against Property	2826	2842	-0.56%	408	349	16.91%	41	29	41.38%	5	1	400.00%	6	1	500.00%
Total Crime	3963	3885	2.01%	516	458	12.66%	58	57	1.75%	8	4	100.00%	7	6	16.67%

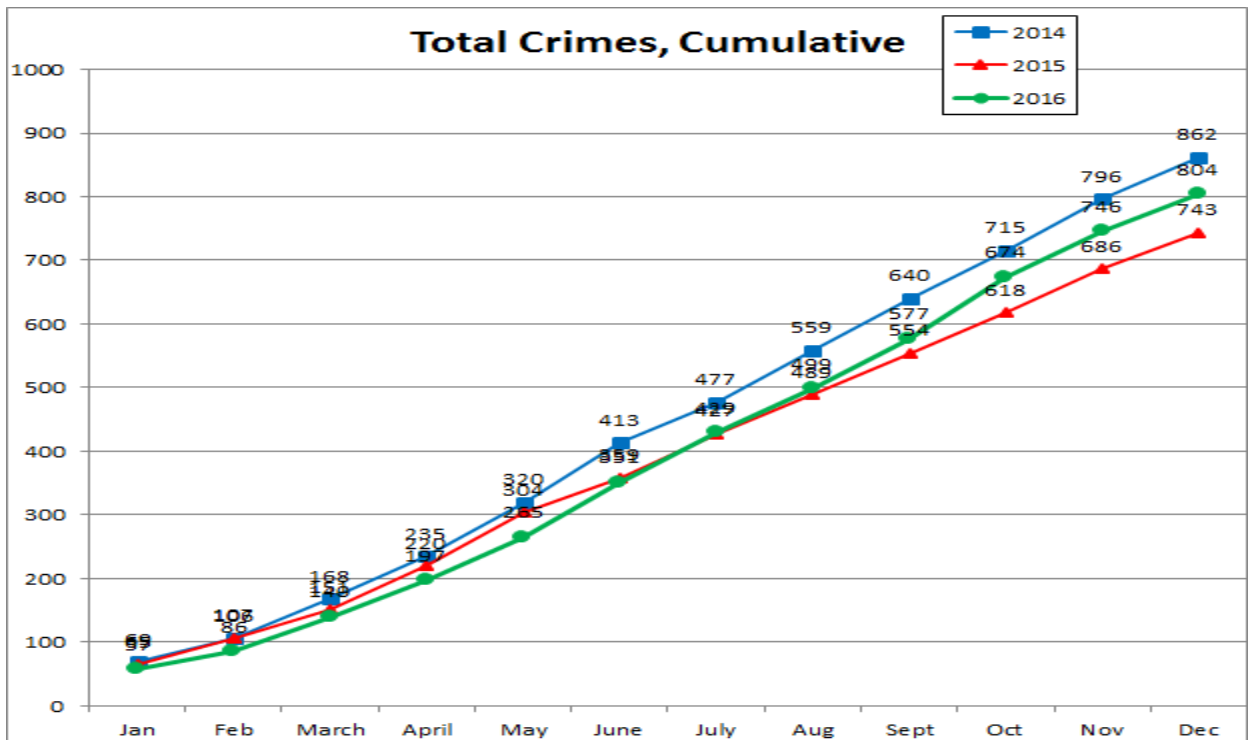
Crime Data Comparison 2015 and 2016: City, ND, CVCBD, Charles St. (Year to date)

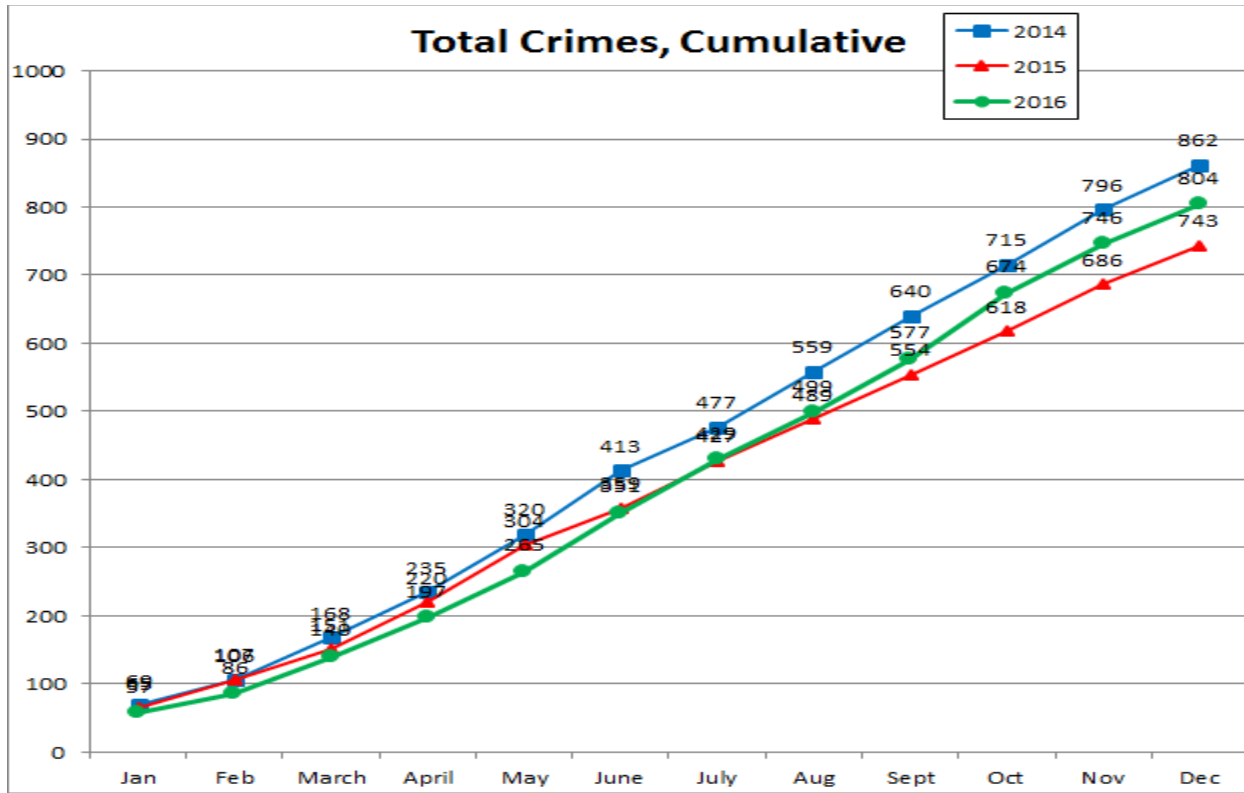
Crimes	Citywide YTD					Northern District YTD					CVCBD YTD					Charles St., 20th-27th YTD					Goldseker (Zone #3) YTD		
	2016	2015	2014	2016-2015 % change	2016-2014 % change	2016	2015	2014	2016-2015 % change	2016-2014 % change	2016	2015	2014	2016-2015 % change	2016-2014 % change	2016	2015	2014	2016-2015 % change	2016-2014 % change	2016	2015	% change
Arson	252	285	217	-11.58%	16.13%	19	27	19	-29.63%	0.00%	1	1	1	0.00%	0.00%	0	0	0	0.00%	0.00%	1	0	Cannot be calculated
Assault	5002	4759	4211	5.11%	18.78%	423	440	362	-3.86%	16.85%	73	63	64	15.87%	14.06%	12	13	5	-7.69%	140.00%	20	11	81.82%
Auto Theft	4534	4558	3609	-0.53%	25.63%	397	501	359	-20.76%	10.58%	74	95	59	-22.11%	25.42%	3	1	1	200.00%	200.00%	14	21	-33.33%
Burglary	7276	7844	6786	-7.24%	7.22%	1015	1245	941	-18.47%	7.86%	150	137	128	9.49%	17.19%	13	15	12	-13.33%	8.33%	25	21	19.05%
Homicide	318	342	208	-7.02%	52.88%	18	22	16	-18.18%	12.50%	3	1	4	200.00%	-25.00%	0	0	0	0.00%	0.00%	2	1	Cannot be calculated
Larceny	10215	10660	11012	-4.17%	-7.24%	1275	1365	1321	-6.59%	-3.48%	215	169	317	27.22%	-32.18%	29	20	55	45.00%	-47.27%	39	23	69.57%
LFA	6423	7051	6341	-8.91%	1.29%	885	982	892	-9.88%	-0.78%	124	97	150	-17.33%	-17.33%	5	7	6	-28.57%	-16.67%	31	18	72.22%
Rape	255	275	228	-7.27%	11.84%	26	39	22	-33.33%	18.18%	1	1	7	0.00%	-85.71%	0	0	1	0.00%	-100.00%	0	0	0.00%
Robbery	5468	4729	3841	15.63%	42.36%	618	614	504	0.65%	22.62%	153	172	129	-11.05%	18.60%	25	22	21	13.64%	19.05%	24	34	-29.41%
Shooting	666	636	364	4.72%	82.97%	45	48	20	-6.25%	125.00%	10	7	3	42.86%	233.33%	0	2	0	-100.00%	0.00%	7	1	600.00%
Crimes Against Persons	11709	10741	8852	9.01%	32.28%	1130	1163	924	-2.84%	22.29%	240	244	207	-1.64%	15.94%	37	37	27	0.00%	37.04%	53	47	12.77%
Crimes Against Property	28700	30398	27965	-5.59%	2.63%	3591	4120	3532	-12.84%	1.67%	564	499	655	13.03%	-13.89%	50	43	74	16.28%	-32.43%	110	83	32.53%
Total Crime	40409	41139	36817	-1.77%	9.76%	4721	5283	4456	-10.64%	5.95%	804	743	862	8.21%	-6.73%	87	80	101	8.75%	-13.86%	163	130	25.38%

Total Crimes (3 year comparison monthly)



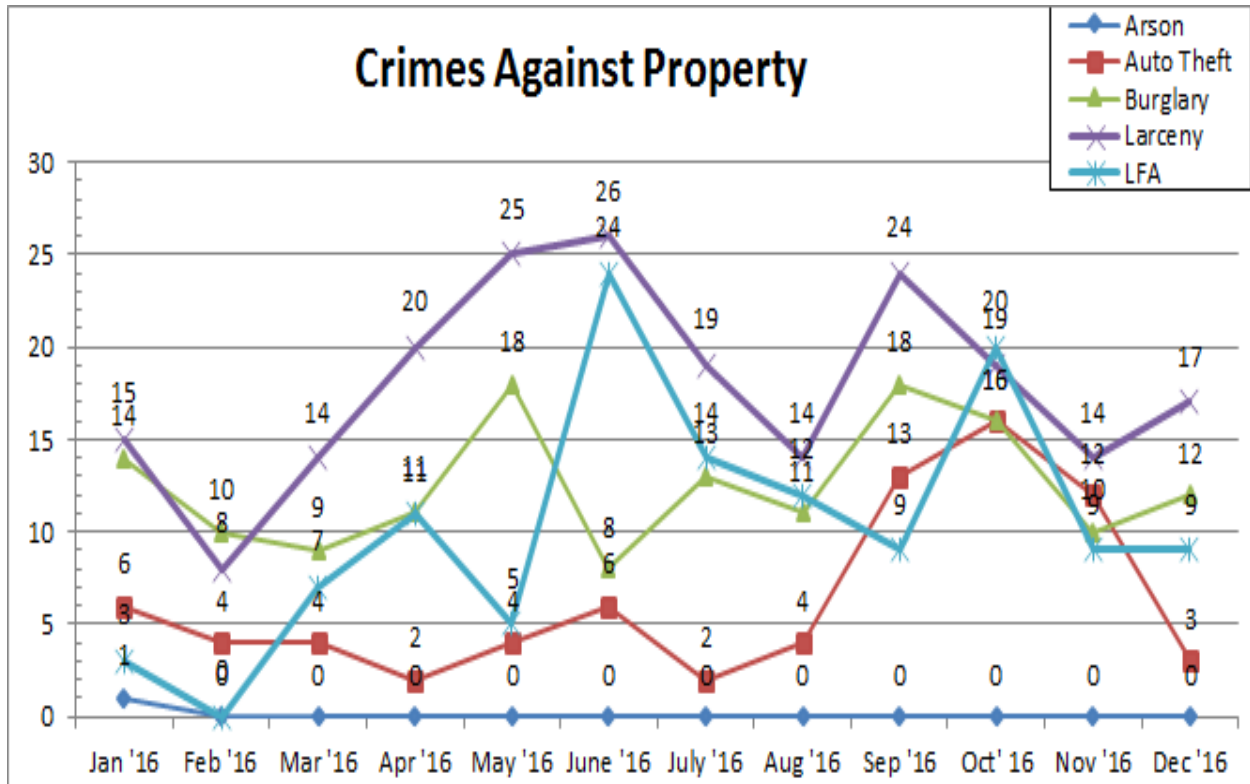
Total Crimes (3 year comparison monthly cumulative)





Crimes	Citywide YTD					Northern District YTD					CVCBD YTD					Charles St., 20th-27th YTD					Goldseker (Zone #3) YTD		
	2016	2015	2014	2016-2015 % change	2016-2014 % change	2016	2015	2014	2016-2015 % change	2016-2014 % change	2016	2015	2014	2016-2015 % change	2016-2014 % change	2016	2015	2014	2016-2015 % change	2016-2014 % change	2016	2015	% change
Arson	252	285	217	-11.58%	16.13%	19	27	19	-29.63%	0.00%	1	1	1	0.00%	0.00%	0	0	0	0.00%	0.00%	1	0	Cannot be calculated
Assault	5002	4759	4211	5.11%	18.78%	423	440	362	-8.86%	16.85%	73	63	64	15.87%	14.06%	12	13	5	-7.69%	140.00%	20	11	81.82%
Auto Theft	4534	4558	3609	-0.53%	25.63%	397	501	359	-20.76%	10.58%	74	95	59	-22.11%	25.42%	3	1	1	200.00%	200.00%	14	21	-33.33%
Burglary	7276	7844	6786	-7.24%	7.22%	1015	1245	941	-18.47%	7.86%	150	137	128	9.49%	17.19%	13	15	12	-13.33%	8.33%	25	21	19.05%
Homicide	318	342	208	-7.02%	52.88%	18	22	16	-18.18%	12.50%	3	1	4	200.00%	-25.00%	0	0	0	0.00%	0.00%	2	1	Cannot be calculated
Larceny	10215	10660	11012	-4.17%	-7.24%	1275	1365	1321	-6.59%	-3.48%	215	169	317	27.22%	-32.18%	29	20	55	45.00%	-47.27%	39	23	69.57%
LFA	6423	7051	6341	-8.91%	1.29%	885	982	892	-9.88%	-0.78%	124	97	150	27.84%	-17.33%	5	7	6	-28.57%	-16.67%	31	18	72.22%
Rape	255	275	228	-7.27%	11.84%	26	39	22	-33.33%	18.18%	1	1	7	0.00%	-85.71%	0	0	1	0.00%	-100.00%	0	0	0.00%
Robbery	5468	4729	3841	15.63%	42.36%	618	614	504	0.65%	22.62%	153	172	129	-11.05%	18.60%	25	22	21	13.64%	19.05%	24	34	-29.41%
Shooting	666	636	364	4.72%	82.97%	45	48	20	-6.25%	125.00%	10	7	3	42.86%	233.33%	0	2	0	-100.00%	0.00%	7	1	600.00%
Crimes Against Persons	11709	10741	8852	9.01%	32.28%	1130	1163	924	-2.84%	22.29%	240	244	207	-1.64%	15.94%	37	37	27	0.00%	37.04%	53	47	12.77%
Crimes Against Property	28700	30398	27965	-5.59%	2.63%	3591	4120	3532	-12.84%	1.67%	564	499	655	13.03%	-13.89%	50	43	74	16.28%	-32.43%	110	83	32.53%
Total Crime	40409	41139	36817	-1.77%	9.76%	4721	5283	4456	-10.64%	5.95%	804	743	862	8.21%	-6.73%	87	80	101	8.75%	-13.86%	163	130	25.38%

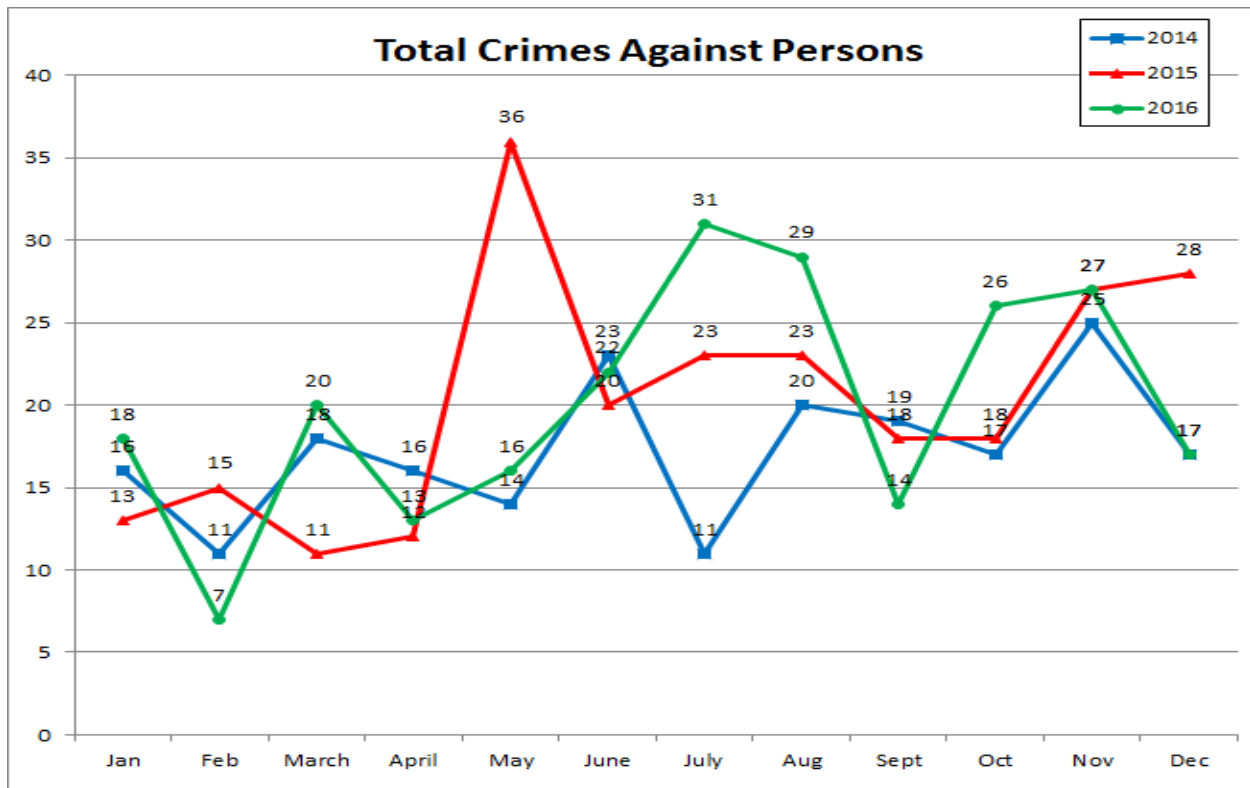
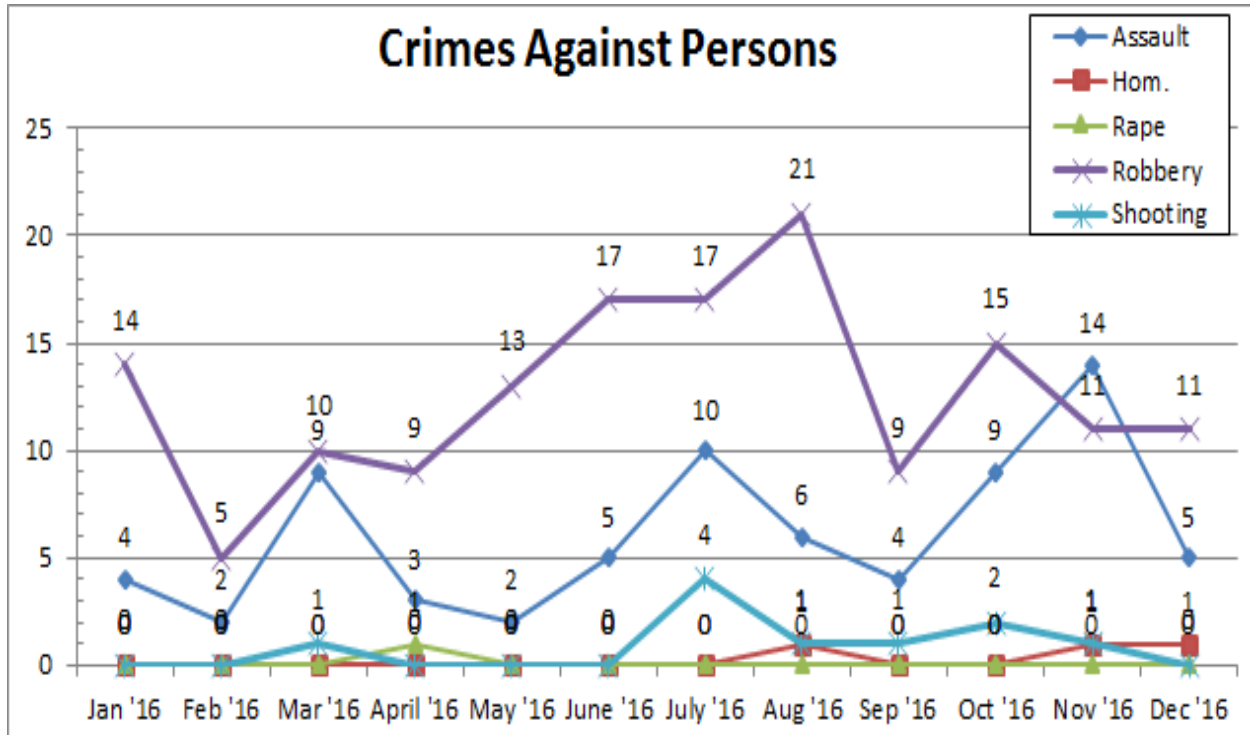
Crimes against Property (monthly during past year)



Crimes against Property (cumulative)

Crimes Against Property																							
Crimes	Citywide YTD					Northern District YTD					CVCBD YTD					Charles St., 20th-27th YTD					Goldseker (Zone #3) YTD		
	2016	2015	2014	2016-2015 % change	2016-2014 % change	2016	2015	2014	2016-2015 % change	2016-2014 % change	2016	2015	2014	2016-2015 % change	2016-2014 % change	2016	2015	2014	2016-2015 % change	2016-2014 % change	2016	2015	% change
Arson	225	262	207	-14.12%	8.70%	19	25	18	-24.00%	5.56%	1	1	1	0.00%	0.00%	0	0	0	0.00%	0.00%	1	0	Cannot be calculated
Auto Theft	4102	4162	3358	-1.44%	22.16%	366	465	336	-21.29%	8.93%	71	91	56	-21.98%	26.79%	3	1	1	200.00%	200.00%	12	21	-42.86%
Burglary	6500	7002	6207	-7.17%	4.72%	859	1124	877	-23.58%	-2.05%	138	125	119	10.40%	15.97%	10	15	10	-33.33%	0.00%	24	21	14.29%
Larceny	9225	9709	10213	-4.99%	-9.67%	1148	1236	1203	-7.12%	-4.57%	198	160	298	23.75%	-33.56%	27	19	52	42.11%	-48.08%	37	23	60.87%
LFA	5822	6421	5838	-9.33%	-0.27%	791	921	817	-14.12%	-3.18%	115	93	132	23.66%	-12.88%	5	7	6	-28.57%	-16.67%	30	17	76.47%
Total	25874	27556	25823	-6.10%	0.20%	3183	3771	3251	-15.59%	-2.09%	523	470	606	11.28%	-13.70%	45	42	69	7.14%	-34.78%	104	82	26.83%

Crimes against Persons (monthly during past year)



Crimes against Persons (cumulative)

Crimes Against Persons																							
Citywide YTD						Northern District YTD					CVCBD YTD					Charles St., 20th-27th YTD					Goldseker (Zone #3) YTD		
Crimes	2016	2015	2014	2016-2015 % change	2016-2014 % change	2016	2015	2014	2016-2015 % change	2016-2014 % change	2016	2015	2014	2016-2015 % change	2016-2014 % change	2016	2015	2014	2016-2015 % change	2016-2014 % change	2016	2015	% change
Assault	5002	4759	4211	5.11%	18.78%	423	440	362	-3.86%	16.85%	73	63	64	15.87%	14.06%	12	13	5	-7.69%	140.00%	20	11	81.82%
Homicide	318	342	208	-7.02%	52.88%	18	22	16	-18.18%	12.50%	3	1	4	200.00%	-25.00%	0	0	0	0.00%	0.00%	2	1	100.00%
Rape	255	275	228	-7.27%	11.84%	26	39	22	-33.33%	18.18%	1	1	7	0.00%	-85.71%	0	0	1	0.00%	-100.00%	0	0	0.00%
Robbery	5468	4729	3841	15.63%	42.36%	618	614	504	0.65%	22.62%	153	172	129	-11.05%	18.60%	25	22	21	13.64%	19.05%	24	34	-29.41%
Shooting	666	636	364	4.72%	82.97%	45	48	20	-6.25%	125.00%	10	7	3	42.86%	233.33%	0	2	0	-100.00%	0.00%	7	1	600.00%
Total	11709	10741	8852	9.01%	32.28%	1130	1163	924	-2.84%	22.29%	240	244	207	-1.64%	15.94%	37	37	27	0.00%	37.04%	53	47	12.77%

Criminal Activity During CVCBD Deployment Hours													
Month/date	Part One Crimes												
December	Arson	Assault	Auto Theft	Burglary	Homicide	Larceny	LFA	Rape	Robbery	Shooting			Totals
1						1	1						2
2													0
3													0
4									3				3
5		1		1		1							3
6						1							1
7				1		1	4		2				8
8				1		1							2
9					1	1							2
10				1									1
11													0
12				2			1		1				4
13													0
14						3							3
15													0
16		1											1
17									1				1
18													0
19		1				1	1		1				4
20			1										1
21													0
22				1									1
23				1									1
24				1		1							2
25				1		3							4
26		1				1							2
27			1										1
28						2			1				3
29			1				1						2
30				1					2				3
31		1		1		1	1						4
Totals	0	5	3	12	1	18	9	0	11	0			59
On duty	0	0	0	2	1	3	0	0	1	0			7
Off duty	0	5	3	10	0	12	7	0	10	0			47
Overlap	0	0	0	0	0	3	2	0	0	0			5
Key:	On duty - "on duty" means the crime occurred while CVCBD patrol officers were deployed												
	Off duty - "off duty" means the crime occurred when CVCBD patrol officers were NOT deployed												
	Overlap - because the exact time the crime occurred is unknown, "overlap" means the crime MAY have occurred when CVCBD patrol officers were deployed												

Other safety related reports available online (under "Safety Services Reports"): Crime Alert (weekly) and Court Watch report (monthly)

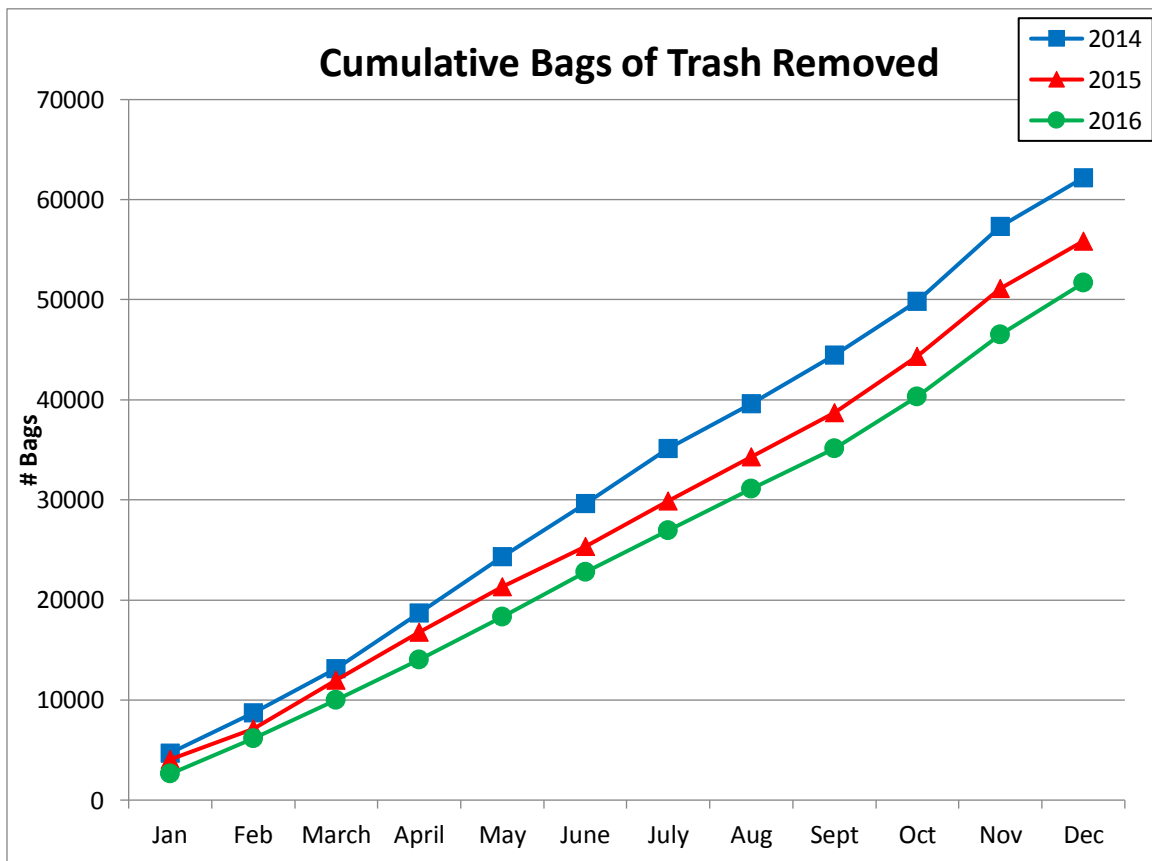
SANITATION SERVICES

Rat Abatement Program:

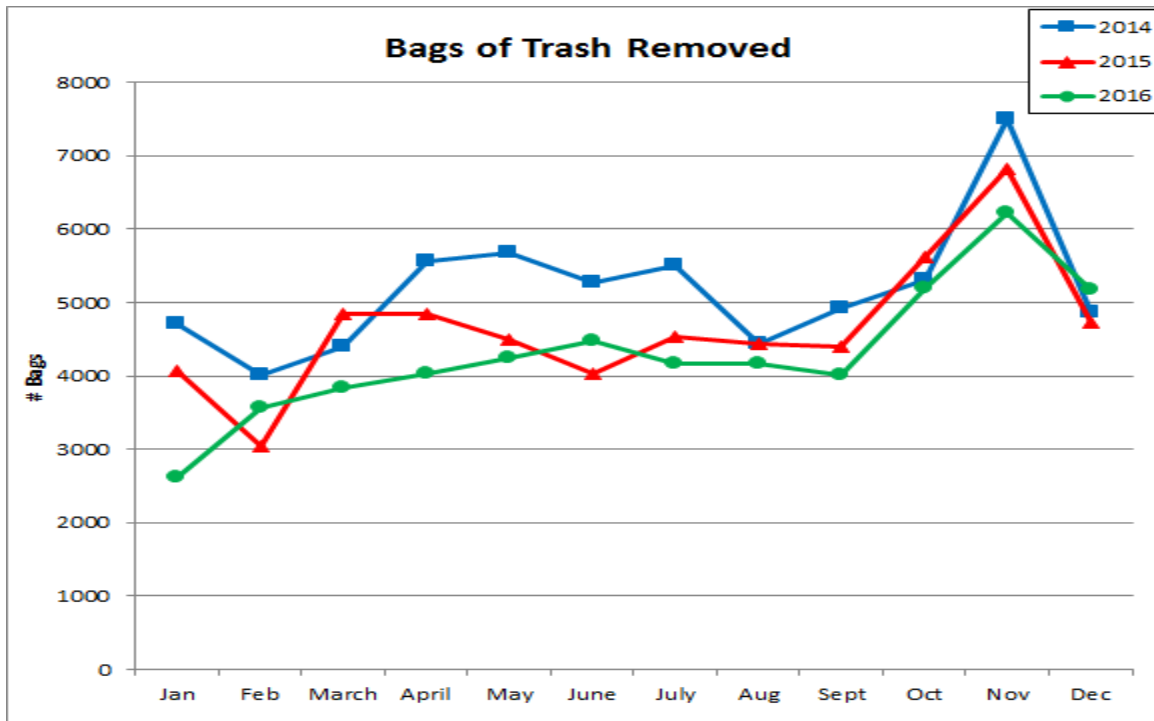
Rat Abatement Program			
Monthly Statistical Report			
	Dec	Year to date	Since September 2012
Dead rats removed	13	276	1,921
Bait station inspections	168	1,953	6,558

Bag Count:

Cumulative since January 2016

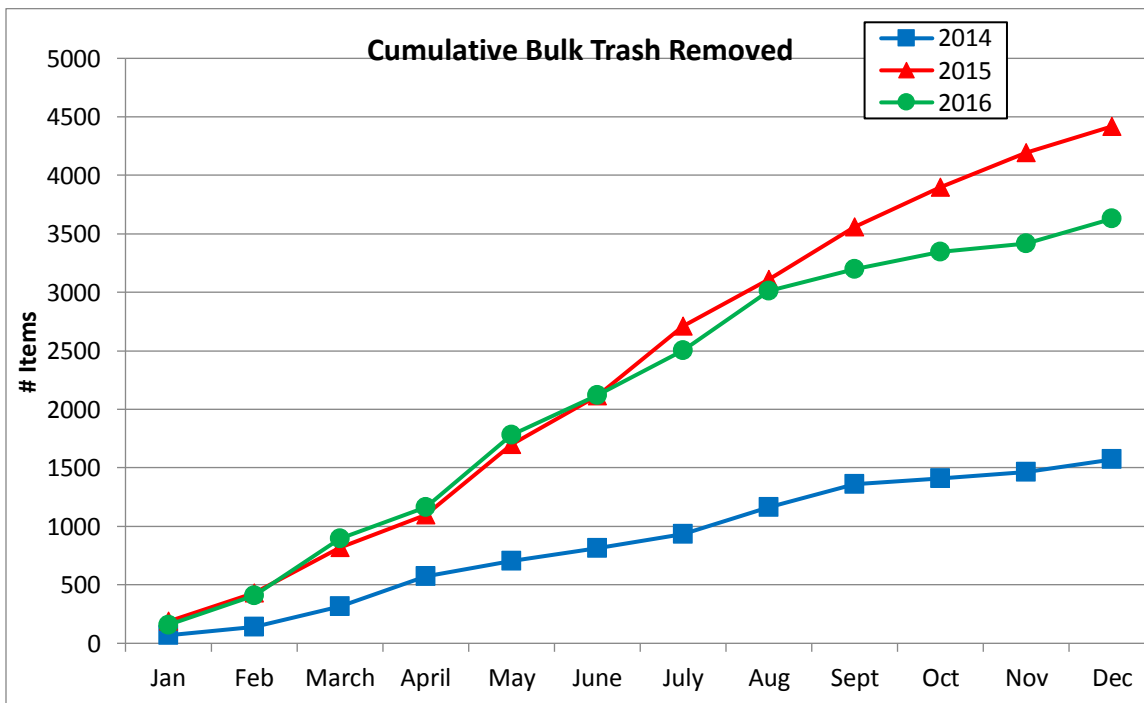


Current month only

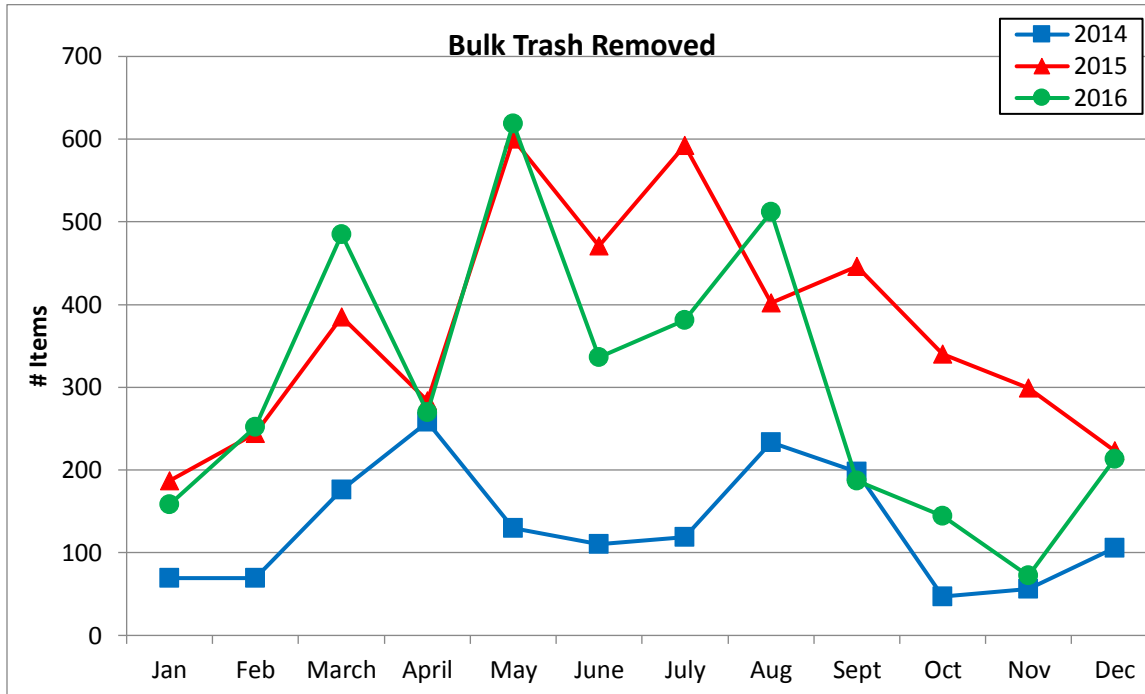


Bulk Trash Count:

Cumulative since January 2016



Current month only



OUTREACH SERVICES

- Crime Alert: 4
- Facebook: 42