



**CHARLES VILLAGE COMMUNITY BENEFITS DISTRICT**  
*"Keeping Charles Village Safe and Clean"*

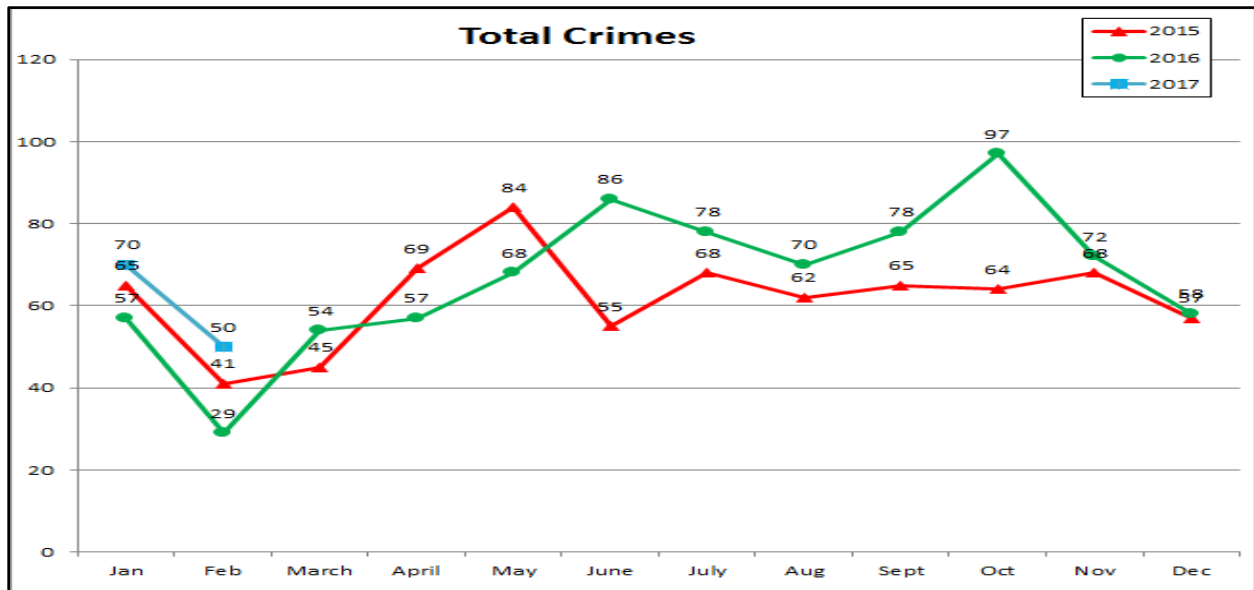
**Executive Director's Report**  
**March 2017**  
**(For the period February 1 - 28 2017)**

**SAFETY SERVICES**

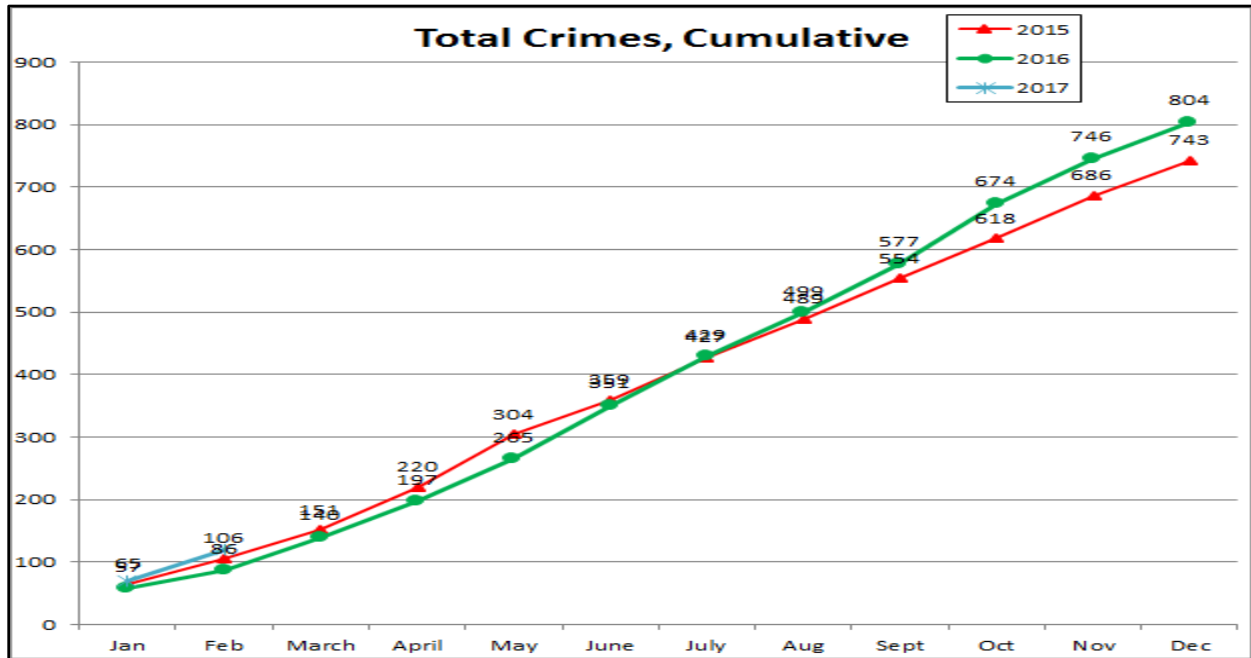
Crime Data Comparison 2015 and 2016: City, ND, CVCBD, Charles St. **(Year to date)**

Crimes	Citywide Feb 2017				Northern District Feb 2017				CVCBD Feb 2017				Charles St., 20th-27th Feb 2017				Goldseker (Zone #3) Feb 2017			
	2017	2016	2015	2017-2016 % change	2017-2015 % change	2017	2016	2015	2017-2016 % change	2017-2015 % change	2017	2016	2015	2017-2016 % change	2017-2015 % change	2017	2016	2015	2017-2016 % change	2017-2015 % change
Arson	12	11	11	9.09%	9.09%	1	1	1	0.00%	0.00%	0	0	0	0.00%	0.00%	0	0	0	0.00%	0.00%
Assault	287	206	238	39.32%	20.59%	20	19	21	5.26%	-4.76%	1	2	5	-50.00%	-80.00%	1	1	1	0.00%	0.00%
Auto Theft	271	227	260	19.38%	4.23%	20	23	42	-13.04%	-52.38%	5	3	3	66.67%	66.67%	0	0	0	0.00%	0.00%
Burglary	403	351	391	14.81%	3.07%	49	48	44	2.06%	11.36%	7	10	3	-30.00%	133.33%	0	1	0	-100.00%	0.00%
Homicide	13	18	13	-27.78%	0.00%	0	0	0	0.00%	0.00%	0	0	0	0.00%	0.00%	0	0	0	0.00%	0.00%
Larceny	551	418	655	31.82%	-15.88%	64	46	72	39.13%	-11.11%	16	8	10	100.00%	60.00%	4	0	2	Cannot be calculated	100.00%
LFA	323	216	310	49.54%	4.19%	52	28	57	85.71%	-8.77%	9	1	10	800.00%	-10.00%	4	1	1	Cannot be calculated	300.00%
Rape	9	14	12	-35.71%	-25.00%	1	0	2	Cannot be calculated	-50.00%	0	0	1	0.00%	-100.00%	0	0	0	0.00%	0.00%
Robbery	316	218	199	44.95%	58.79%	31	33	27	-6.06%	14.81%	10	5	9	100.00%	11.11%	1	1	1	0.00%	0.00%
Shooting	36	21	13	71.43%	176.92%	1	0	1	Cannot be calculated	0.00%	2	0	0	Cannot be calculated	Cannot be calculated	0	0	0	0.00%	0.00%
Crimes Against Persons	661	477	475	38.57%	39.16%	53	52	51	1.92%	3.92%	13	7	15	85.71%	-13.33%	2	2	2	0.00%	0.00%
Crimes Against Property	1560	1223	1627	27.56%	-4.12%	186	146	216	27.40%	-13.89%	37	22	26	68.18%	42.31%	8	2	3	300.00%	166.67%
<b>Total Crime</b>	<b>2221</b>	<b>1700</b>	<b>2102</b>	<b>30.65%</b>	<b>5.66%</b>	<b>239</b>	<b>198</b>	<b>267</b>	<b>20.71%</b>	<b>-10.49%</b>	<b>50</b>	<b>29</b>	<b>41</b>	<b>72.41%</b>	<b>21.95%</b>	<b>10</b>	<b>4</b>	<b>5</b>	<b>150.00%</b>	<b>100.00%</b>

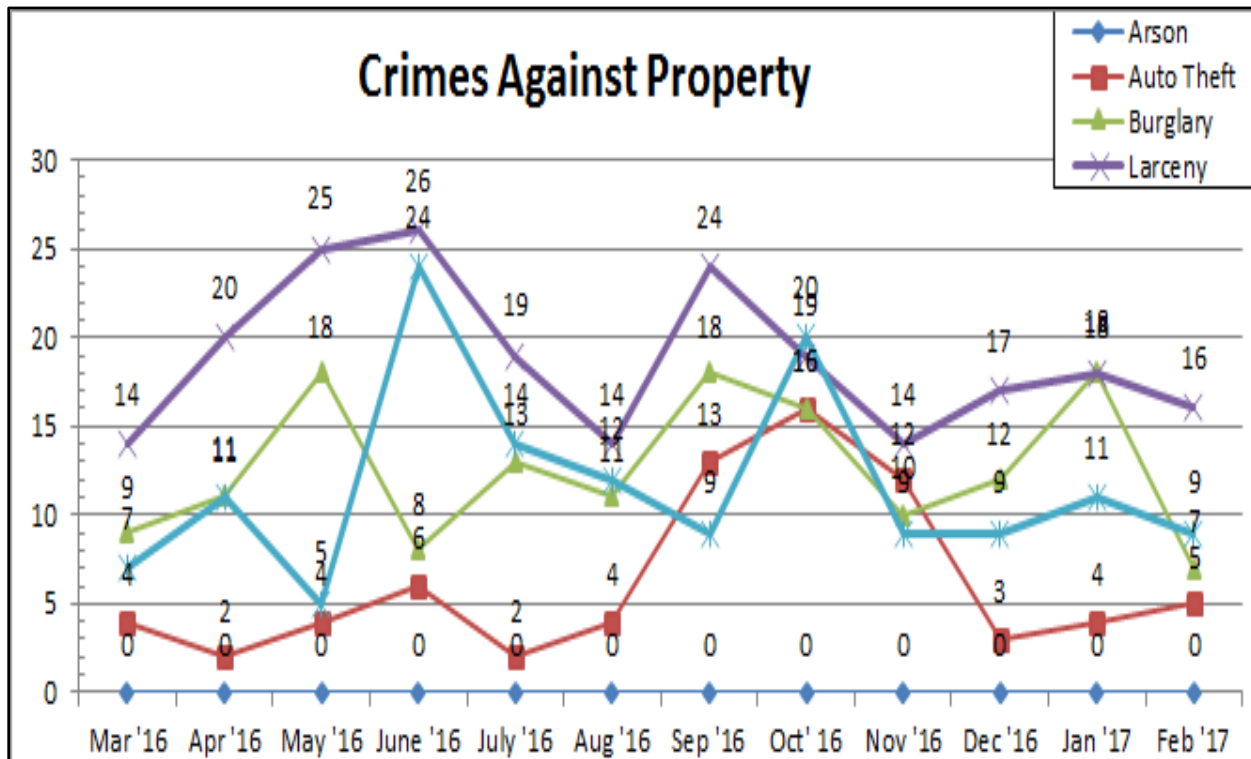
Total Crimes (3 year comparison monthly)



Total Crimes (3-year comparison cumulative)



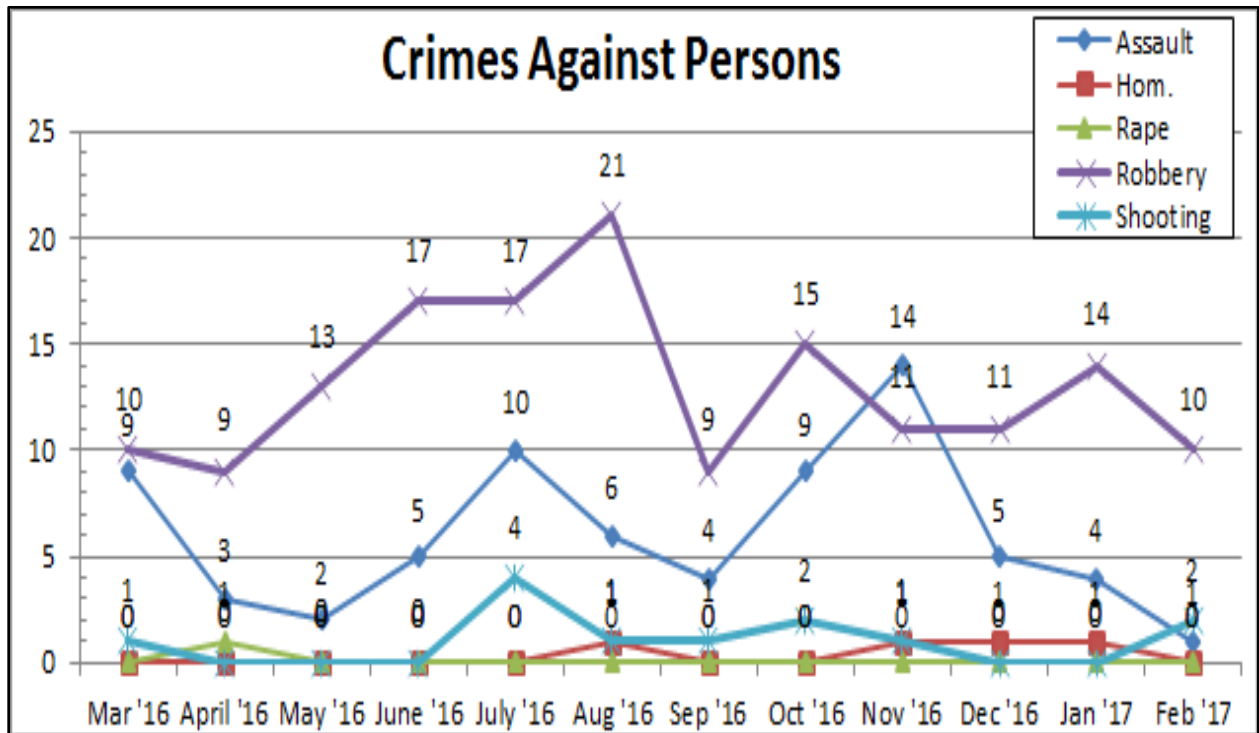
Crimes against Property by Type (monthly during past year)



Crimes against Property (total)

Crimes Against Property																									
Crimes	Citywide YTD					Northern District YTD					CVCBD YTD					Charles St., 20th-27th YTD			Goldseker (Zone #3) YTD						
	2017	2016	2015	2017-2016 % change	2017-2015 % change	2017	2016	2015	2017-2016 % change	2017-2015 % change	2017	2016	2015	2017-2016 % change	2017-2015 % change	2017	2016	2015	2017-2016 % change	2017-2015 % change	2017	2016	2015	2017-2016 % change	2017-2015 % change
Arson	25	28	28	-10.71%	-10.71%	3	3	4	0.00%	-25.00%	0	1	0	-100.00%	0.00%	0	0	0	0.00%	0.00%	0	1	0	-100.00%	0.00%
Auto Theft	809	666	582	21.47%	39.00%	56	59	70	-5.08%	-20.00%	9	9	6	0.00%	50.00%	1	0	0	Cannot be calculated	Cannot be calculated	1	0	4	Cannot be calculated	-75.00%
Burglary	1160	961	959	20.71%	20.96%	180	118	95	52.54%	89.47%	25	24	6	4.17%	316.67%	1	3	1	-66.67%	0.00%	7	3	1	133.33%	600.00%
Larceny	1392	1175	1512	18.47%	-7.94%	167	149	168	12.08%	-0.60%	34	23	32	47.83%	6.25%	8	2	7	300.00%	14.29%	5	3	6	66.67%	-16.67%
LFA	955	701	793	36.23%	20.43%	118	84	135	40.48%	-12.59%	20	4	34	400.00%	-41.18%	7	1	3	600.00%	133.33%	5	1	5	400.00%	0.00%
<b>Total</b>	<b>4341</b>	<b>3531</b>	<b>3874</b>	<b>22.94%</b>	<b>12.05%</b>	<b>524</b>	<b>413</b>	<b>472</b>	<b>26.88%</b>	<b>11.02%</b>	<b>88</b>	<b>61</b>	<b>78</b>	<b>44.26%</b>	<b>12.82%</b>	<b>17</b>	<b>6</b>	<b>11</b>	<b>183.33%</b>	<b>54.55%</b>	<b>18</b>	<b>8</b>	<b>16</b>	<b>125.00%</b>	<b>12.50%</b>

Crimes against Persons by Type (monthly during past year)



Crimes against Persons (total)

Crimes Against Persons																										
Crimes	Citywide YTD					Northern District YTD					CVCBD YTD					Charles St., 20th-27th YTD				Goldseker (Zone #3) YTD						
	2017	2016	2015	2017-2016 % change	2017-2015 % change	2017	2016	2015	2017-2016 % change	2017-2015 % change	2017	2016	2015	change	2017-2016 % change	2017-2015 % change	2017	2016	2015	% change	% change	2017	2016	2015	change	2017-2016 % change
Assault	824	570	536	44.56%	53.73%	48	53	45	-9.43%	6.67%	5	6	7	-16.67%	-28.57%	1	1	1	0.00%	0.00%	0	2	1	-100.00%	-100.00%	
Homicide	50	35	35	42.86%	42.86%	3	1	1	200.00%	200.00%	1	0	0	Cannot be calculated	Cannot be calculated	0	0	0	0.00%	0.00%	0	0	0	0.00%	0.00%	
Rape	28	38	26	-26.32%	7.69%	4	3	5	33.33%	-40.00%	0	0	1	0.00%	-100.00%	0	0	0	0.00%	0.00%	0	0	0	0.00%	0.00%	
Robbery	930	666	544	39.64%	70.96%	114	74	65	54.05%	75.38%	24	19	20	26.32%	20.00%	3	2	3	50.00%	0.00%	5	6	5	-16.67%	0.00%	
Shooting	114	62	46	83.87%	147.83%	6	2	4	200.00%	50.00%	2	0	0	Cannot be calculated	Cannot be calculated	0	0	0	0.00%	0.00%	1	0	0	Cannot be calculated	Cannot be calculated	
<b>Total</b>	1946	1371	1187	41.94%	63.94%	175	133	120	31.58%	45.83%	32	25	28	28.00%	14.29%	4	3	4	33.33%	0.00%	6	8	6	-25.00%	0.00%	

Other safety related reports available online (under "Safety Services Reports"): *Crime Alert* (weekly) and *Court Watch* report (monthly)

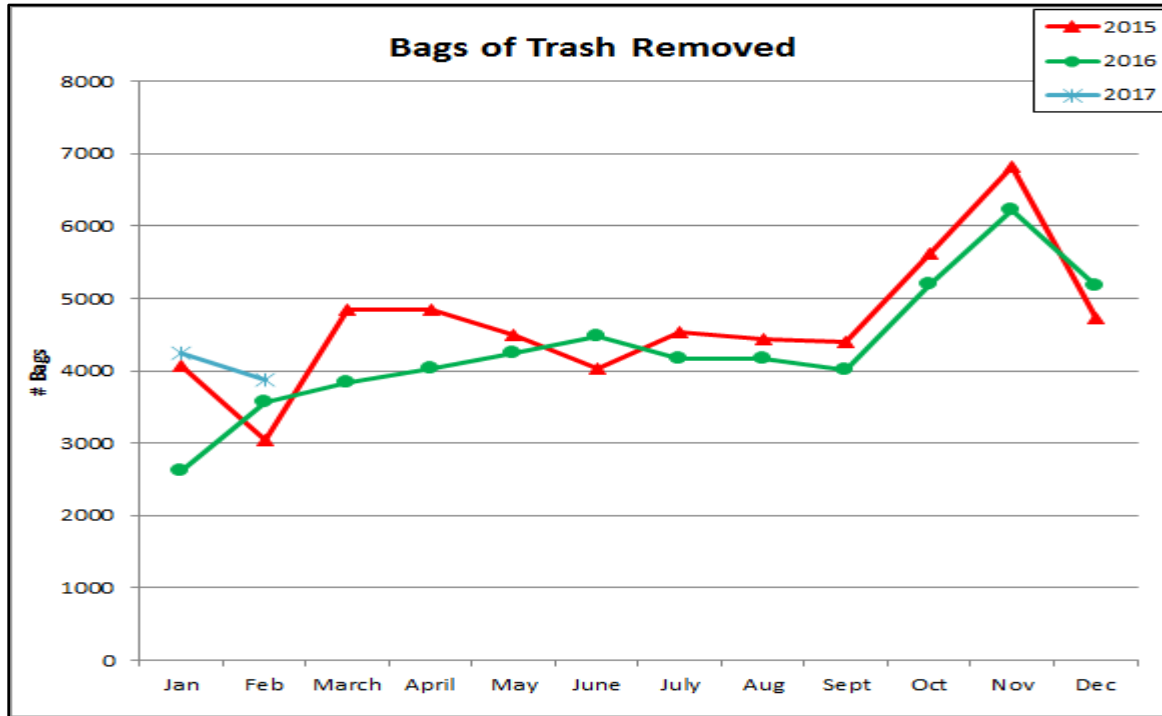
**SANITATION SERVICES**

Rat Abatement Program:

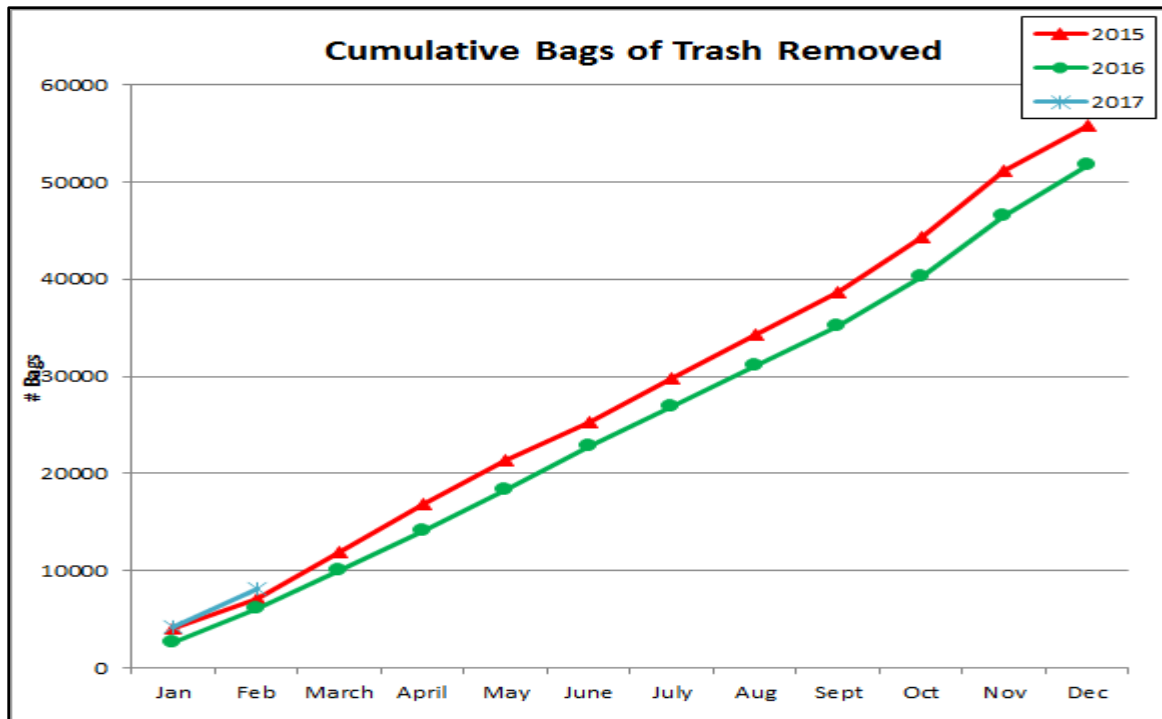
Rat Abatement Program			
Monthly Statistical Report			
	Feb	Year to date	Since September 2012
Dead rats removed	9	20	1,941
Bait station inspections	168	756	7,314

Bag Count:

Current month only

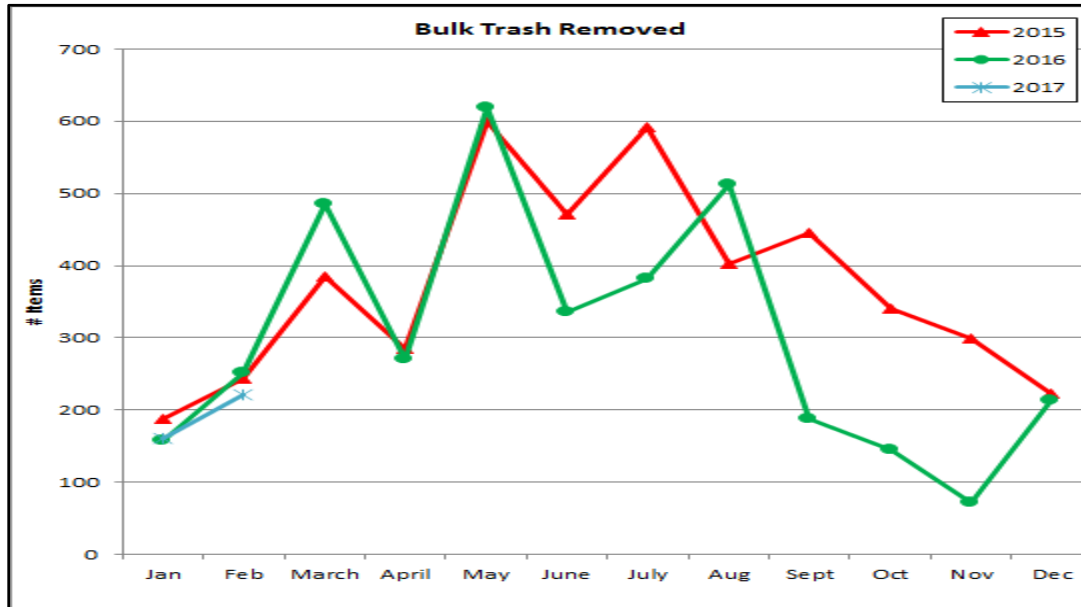


Cumulative

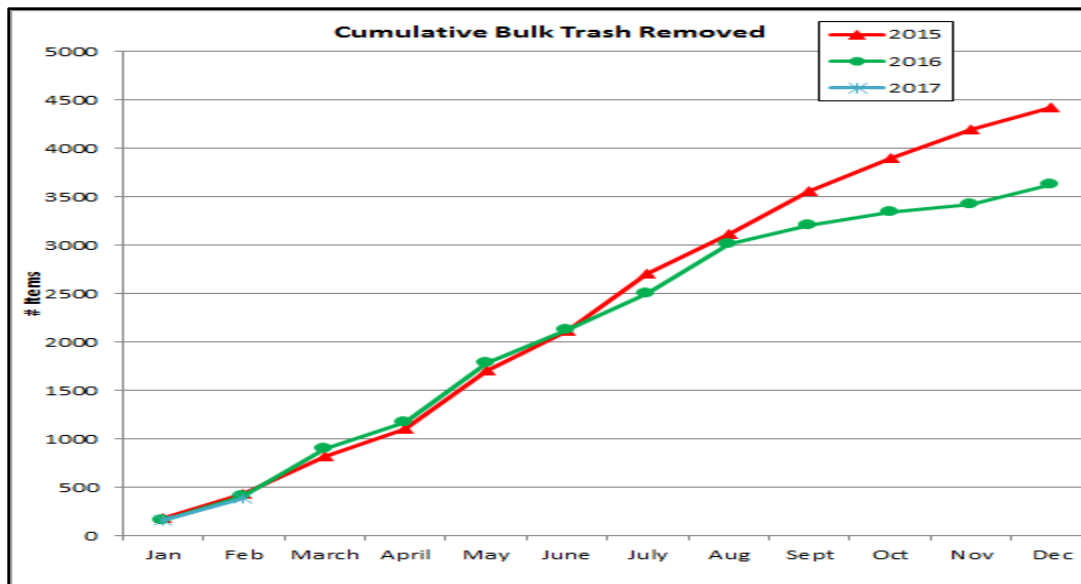


Bulk Trash Count:

Current month only



Cumulative



OUTREACH SERVICES

- Crime Alert: 4 (one issue reported on two weeks' crime)
- Facebook: 48