



CHARLES VILLAGE COMMUNITY BENEFITS DISTRICT  
*"Keeping Charles Village Safe and Clean"*

## Executive Director's Report

November 2016  
 (For the period October 1 - 31 2016)

### SAFETY SERVICES

#### Neighborhood Walkers on Patrol

Neighborhood Walk Stats		
Walk Location	Nov. '16	Cumulative 16
CV Central	0	2
CV West	0	7
Abell	1	7
Waverly	0	5
Harwood	0	1
Walks Held	1	18
Walks Cancelled	0	69
Participants	15	256

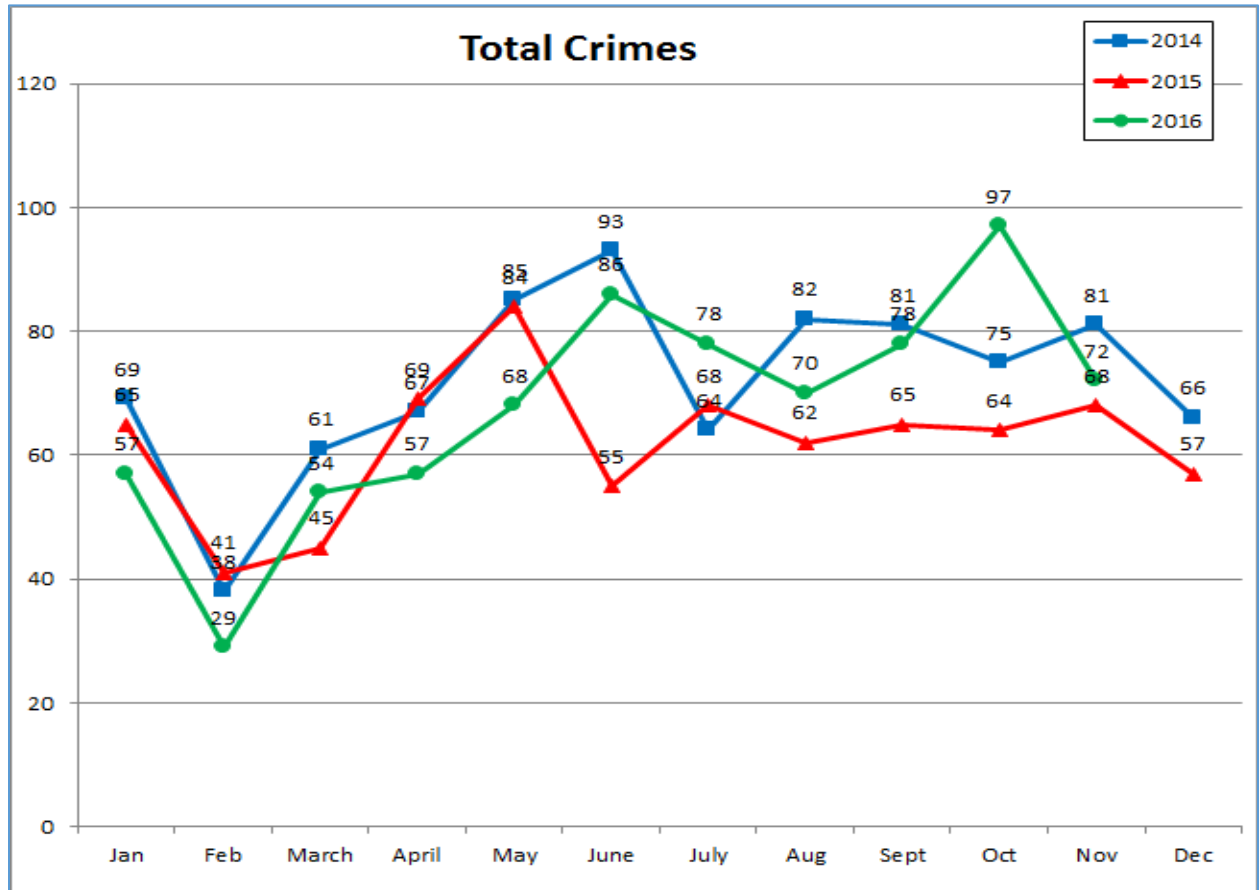
#### Crime Data Comparison 2015 and 2016: City, ND, CVCBD, Charles St. (November only)

Crimes	Citywide November 2016			Northern District November 2016			CVCBD November 2016			Charles St., 20th-27th November 2016			Goldseker (Zone #3) November 2016		
	2016	2015	% change	2016	2015	% change	2016	2015	% change	2016	2015	% change	2016	2015	% change
Arson	12	19	-36.84%	1	5	-80.00%	0	0	0.00%	0	0	0.00%	0	0	0.00%
Assault	380	318	19.50%	41	27	51.85%	14	5	180.00%	1	2	-50.00%	3	0	Cannot be calculated
Auto Theft	383	352	8.81%	37	39	-5.13%	12	9	33.33%	1	0	Cannot be calculated	3	5	-40.00%
Burglary	622	629	-1.11%	95	104	-8.65%	10	8	25.00%	0	1	-100.00%	4	2	100.00%
Homicide	26	27	-3.70%	3	0	Cannot be calculated	1	0	0.00%	0	0	0.00%	0	0	0.00%
Larceny	793	801	-1.00%	76	89	-14.61%	14	15	-6.67%	1	1	0.00%	3	0	Cannot be calculated
LFA	626	584	7.19%	95	63	50.79%	9	9	0.00%	0	0	0.00%	2	2	0.00%
Rape	21	27	-22.22%	0	5	-100.00%	0	0	0.00%	0	0	0.00%	0	0	0.00%
Robbery	545	426	27.93%	62	48	29.17%	11	21	-47.62%	2	1	100.00%	0	8	-100.00%
Shooting	41	51	-19.61%	1	6	-83.33%	1	1	0.00%	0	0	0.00%	0	0	0.00%
Crimes Against Persons	1013	849	19.32%	107	86	24.42%	27	27	0.00%	3	3	0.00%	3	8	-62.50%
Crimes Against Property	2436	2385	2.14%	304	300	1.33%	45	41	9.76%	2	2	0.00%	12	9	33.33%
<b>Total Crime</b>	<b>3449</b>	<b>3234</b>	<b>6.65%</b>	<b>411</b>	<b>386</b>	<b>6.48%</b>	<b>72</b>	<b>68</b>	<b>5.88%</b>	<b>5</b>	<b>5</b>	<b>0.00%</b>	<b>15</b>	<b>17</b>	<b>-11.76%</b>

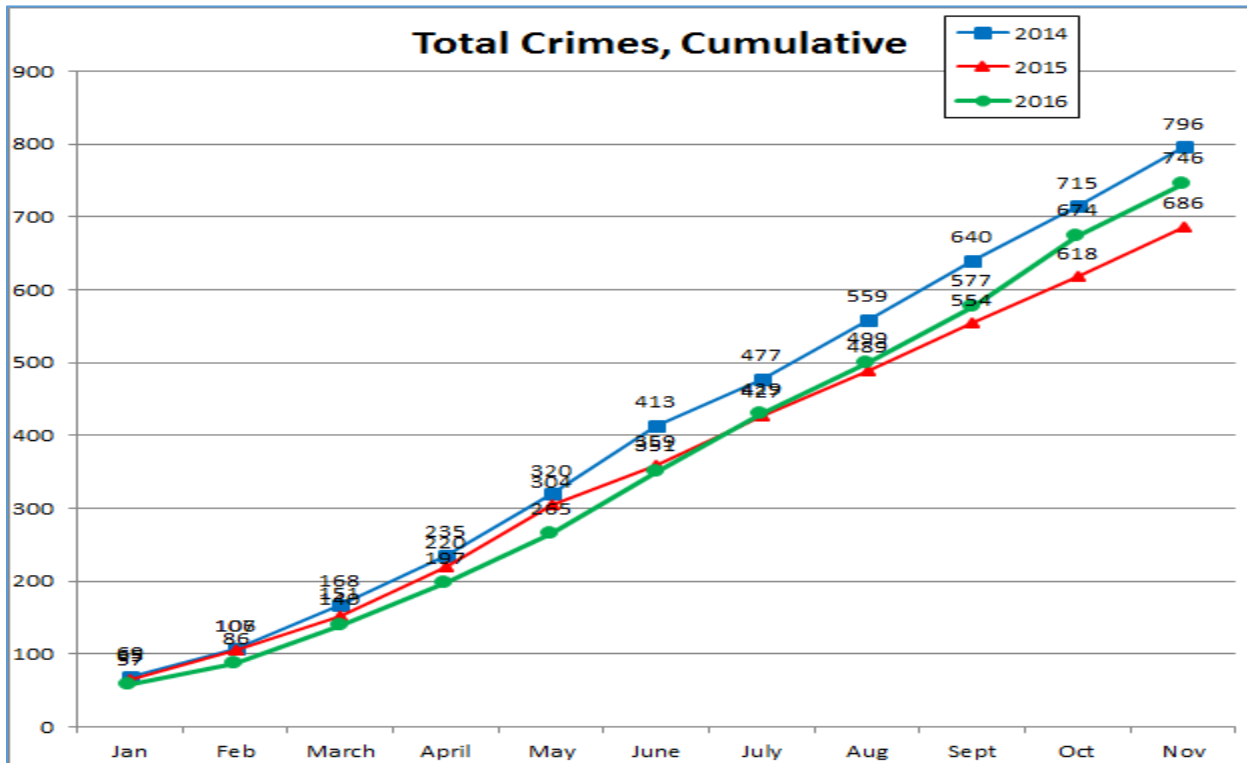
Crime Data Comparison 2015 and 2016: City, ND, CVCBD, Charles St. (Year to date)

Crimes	Citywide YTD					Northern District YTD					CVCBD YTD					Charles St., 20th-27th YTD					Goldseker (Zone #3) YTD		
	2016	2015	2014	2016-2015 % change	2016-2014 % change	2016	2015	2014	2016-2015 % change	2016-2014 % change	2016	2015	2014	2016-2015 % change	2016-2014 % change	2016	2015	2014	2016-2015 % change	2016-2014 % change	2016	2015	% change
Arson	225	262	207	-14.12%	8.70%	19	25	18	-24.00%	5.56%	1	1	1	0.00%	0.00%	0	0	0	0.00%	0.00%	1	0	Cannot be calculated
Assault	4556	4363	3927	4.42%	16.02%	403	402	338	0.25%	19.23%	68	59	60	15.25%	13.33%	11	12	4	-8.33%	175.00%	20	10	100.00%
Auto Theft	4102	4162	3358	-1.44%	22.16%	366	465	336	-21.29%	8.93%	71	91	56	-21.98%	26.79%	3	1	1	200.00%	200.00%	12	21	-42.86%
Burglary	6500	7002	6207	-7.17%	4.72%	859	1124	877	-23.58%	-2.05%	138	125	119	10.40%	15.97%	10	15	10	-33.33%	0.00%	24	21	14.29%
Homicide	285	307	195	-7.17%	46.15%	16	19	16	-15.79%	0.00%	2	0	3	Cannot be calculated	-33.33%	0	0	0	0.00%	0.00%	1	0	Cannot be calculated
Larceny	9225	9709	10213	-4.99%	-9.67%	1148	1236	1203	-7.12%	-4.57%	198	160	298	23.75%	-33.56%	27	19	52	42.11%	-48.08%	37	23	60.87%
LFA	5822	6421	5838	-9.33%	-0.27%	791	921	817	-14.12%	-3.18%	115	93	132	23.66%	-12.88%	5	7	6	-28.57%	-16.67%	30	17	76.47%
Rape	235	249	211	-5.62%	11.37%	21	35	21	-40.00%	0.00%	1	1	7	0.00%	-85.71%	0	0	1	0.00%	-100.00%	0	0	0.00%
Robbery	4890	4194	3493	16.60%	39.99%	540	554	454	-2.53%	18.94%	142	149	117	-4.70%	21.37%	23	20	18	15.00%	27.78%	24	31	-22.58%
Shooting	606	585	336	3.59%	80.36%	42	44	18	-4.55%	133.33%	10	7	3	42.86%	233.33%	0	2	0	-100.00%	0.00%	7	1	600.00%
Crimes Against Persons	10572	9698	8162	9.01%	29.53%	1022	1054	847	-3.04%	20.66%	223	216	190	3.24%	17.37%	34	34	23	0.00%	47.83%	52	42	23.81%
Crimes Against Property	25874	27556	25823	-6.10%	0.20%	3183	3771	3251	-15.59%	-2.09%	523	470	606	11.28%	-13.70%	45	42	69	7.14%	-34.78%	104	82	26.83%
<b>Total Crime</b>	<b>36446</b>	<b>37254</b>	<b>33985</b>	<b>-2.17%</b>	<b>7.24%</b>	<b>4205</b>	<b>4825</b>	<b>4098</b>	<b>-12.85%</b>	<b>2.61%</b>	<b>746</b>	<b>686</b>	<b>796</b>	<b>8.75%</b>	<b>-6.28%</b>	<b>79</b>	<b>76</b>	<b>92</b>	<b>9.95%</b>	<b>-14.13%</b>	<b>156</b>	<b>124</b>	<b>25.81%</b>

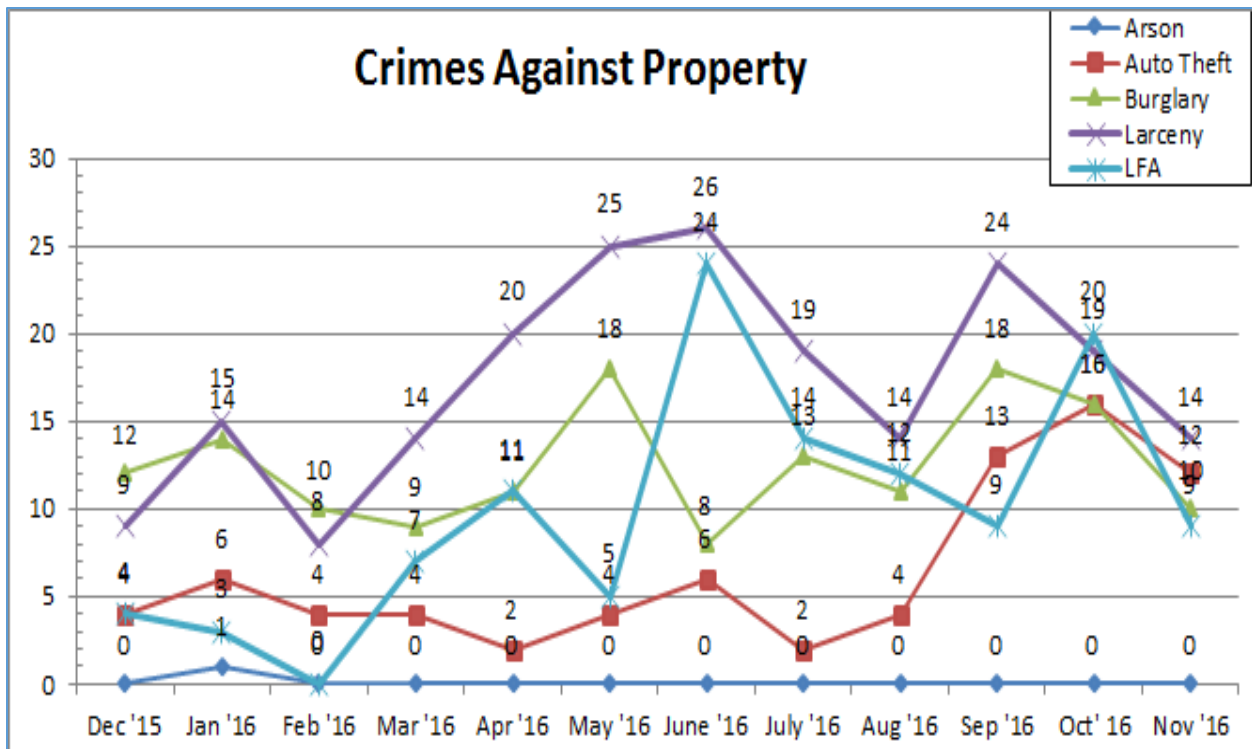
Total Crimes (3 year comparison monthly)



Total Crimes (3 year comparison monthly cumulative)



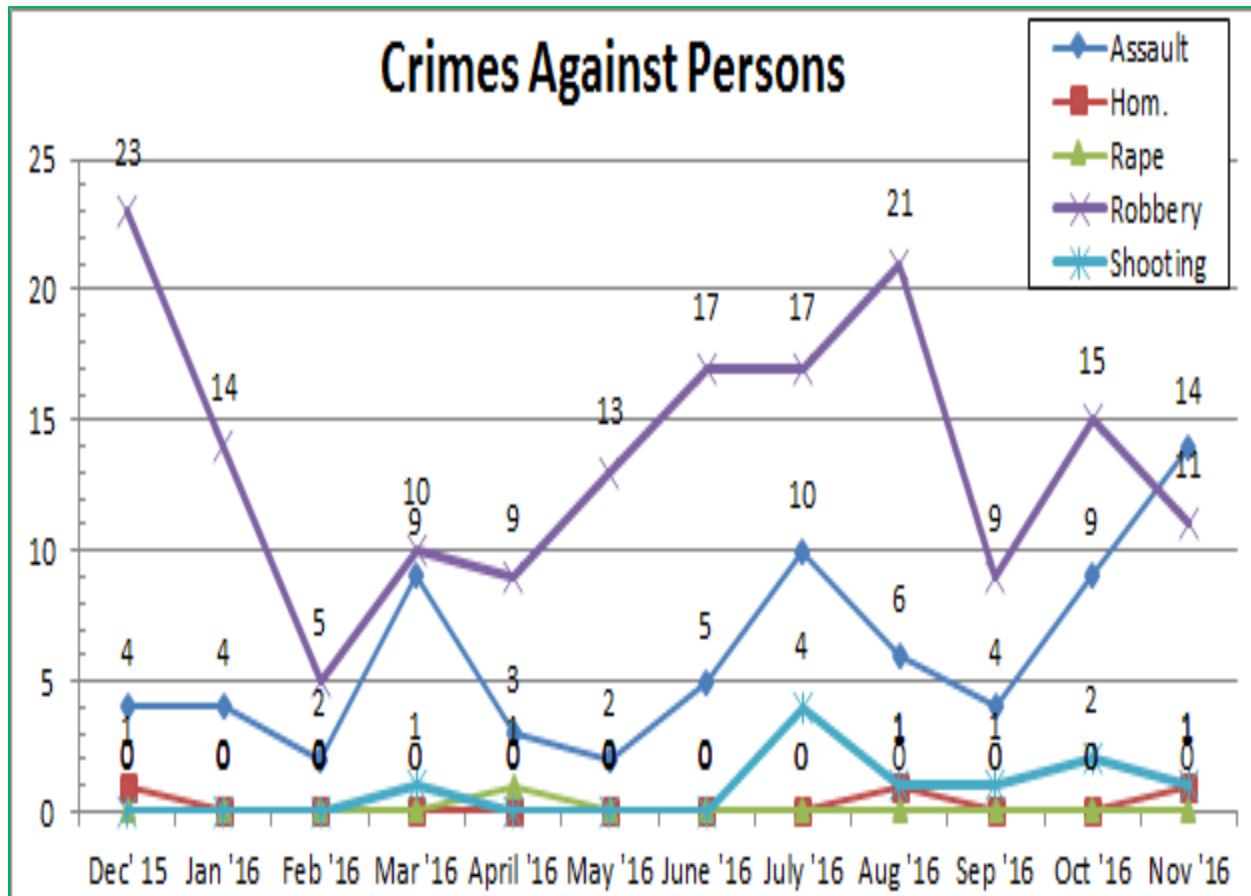
Crimes against Property (monthly during past year)



Crimes against Property (cumulative)

Crimes Against Property																							
Crimes	Citywide YTD					Northern District YTD					CVCBD YTD					Charles St., 20th-27th YTD					Goldseker (Zone #3) YTD		
	2016	2015	2014	2016-2015 % change	2016-2014 % change	2016	2015	2014	2016-2015 % change	2016-2014 % change	2016	2015	2014	2016-2015 % change	2016-2014 % change	2016	2015	2014	2016-2015 % change	2016-2014 % change	2016	2015	% change
Arson	225	262	207	-14.12%	8.70%	19	25	18	-24.00%	5.56%	1	1	1	0.00%	0.00%	0	0	0	0.00%	0.00%	1	0	Cannot be calculated
Auto Theft	4102	4162	3358	-1.44%	22.16%	366	465	336	-21.29%	8.93%	71	91	56	-21.98%	26.79%	3	1	1	200.00%	200.00%	12	21	-42.86%
Burglary	6500	7002	6207	-7.17%	4.72%	859	1124	877	-23.58%	-2.05%	138	125	119	10.40%	15.97%	10	15	10	-33.33%	0.00%	24	21	14.29%
Larceny	9225	9709	10213	-4.99%	-9.67%	1148	1236	1203	-7.12%	-4.57%	198	160	298	23.75%	-33.56%	27	19	52	42.11%	-48.08%	37	23	60.87%
LFA	5822	6421	5838	-9.33%	-0.27%	791	921	817	-14.12%	-3.18%	115	93	132	23.66%	-12.88%	5	7	6	-28.57%	-16.67%	30	17	76.47%
<b>Total</b>	<b>25874</b>	<b>27556</b>	<b>25823</b>	<b>-6.10%</b>	<b>0.20%</b>	<b>3183</b>	<b>3771</b>	<b>3251</b>	<b>-15.59%</b>	<b>-2.09%</b>	<b>523</b>	<b>470</b>	<b>606</b>	<b>11.28%</b>	<b>-13.70%</b>	<b>45</b>	<b>42</b>	<b>69</b>	<b>7.14%</b>	<b>-34.78%</b>	<b>104</b>	<b>82</b>	<b>26.83%</b>

Crimes against Persons (monthly during past year)



Crimes against Persons (cumulative)

Crimes Against Persons																									
Citywide YTD					Northern District YTD					CVCBD YTD					Charles St., 20th-27th YTD			Goldseker (Zone #3) YTD							
2016	2015	2014	2016-2015 % change	2016-2014 % change	2016	2015	2014	2016-2015 % change	2016-2014 % change	2016	2015	2014	2016-2015 % change	2016-2014 % change	2016	2015	2014	2016-2015 % change	2016-2014 % change	2016	2015	2014	2016-2015 % change	2016-2014 % change	
4556	4363	3927	4.42%	16.02%	403	402	338	0.25%	19.23%	68	59	60	15.25%	13.33%	11	12	4	-8.33%	175.00%	20	10				100.00%
285	307	195	-7.17%	46.15%	16	19	16	-15.79%	0.00%	2	0	3	Cannot be calculated	-33.33%	0	0	0	0.00%	0.00%	1	0				Cannot be calculated
235	249	211	-5.62%	11.37%	21	35	21	-40.00%	0.00%	1	1	7	0.00%	-85.71%	0	0	1	0.00%	-100.00%	0	0				0.00%
4890	4194	3493	16.60%	39.99%	540	554	454	-2.53%	18.94%	142	149	117	-4.70%	21.37%	23	20	18	15.00%	27.78%	24	31				-22.58%
606	585	336	3.59%	80.36%	42	44	18	-4.55%	133.33%	10	7	3	42.86%	233.33%	0	2	0	-100.00%	0.00%	7	1				600.00%
10572	9698	8162	9.01%	29.53%	1022	1054	847	-3.04%	20.66%	223	216	190	3.24%	17.37%	34	34	23	0.00%	47.83%	52	42				23.81%

Criminal Activity During CVCBD Deployment Hours											
Month/date	Part One Crimes										Totals
November	Arson	Assault	Auto Theft	Burglary	Homicide	Larceny	LFA	Rape	Robbery	Shooting	
1		1				1	1				3
2			1			1	1			1	4
3			1				1				2
4						1					1
5			2						2		4
6						3			2		5
7						1			1		2
8		1	1	3							5
9									1		1
10		1	1				1				3
11			1			2			1		4
12		1				1	2				4
13			1	1							2
14											0
15					1				2		3
16		1		1			1				3
17		5				1					6
18				1							1
19											0
20											0
21											0
22				2		1	1				4
23		1	1			1					3
24		1		2							3
25			1			1	1				3
26											0
27									1		1
28		1	1						1		3
29		1									1
30			1								1
<b>Totals</b>	0	14	12	10	1	14	9	0	11	1	72
<b>On duty</b>					1	1			2		4
<b>Off duty</b>		14	9	10		12	9		9	1	64
<b>Overlap</b>			3			1					4
<b>Key:</b>	On duty - "on duty" means the crime occurred while CVCBD patrol officers were deployed										
	Off duty - "off duty" means the crime occurred when CVCBD patrol officers were NOT deployed										
	Overlap - because the exact time the crime occurred is unknown, "overlap" means the crime MAY have occurred when CVCBD patrol officers were deployed										

Other safety related reports available online (under "Safety Services Reports"): *Crime Alert* (weekly) and *Court Watch* report (monthly)

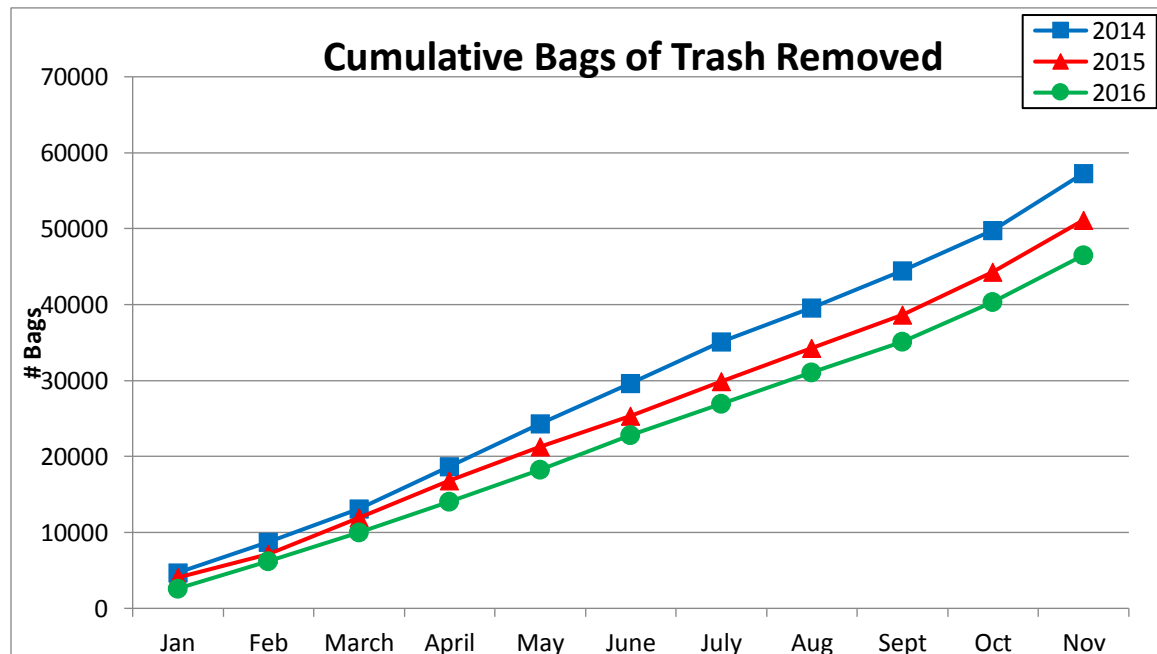
**SANITATION SERVICES**

Rat Abatement Program:

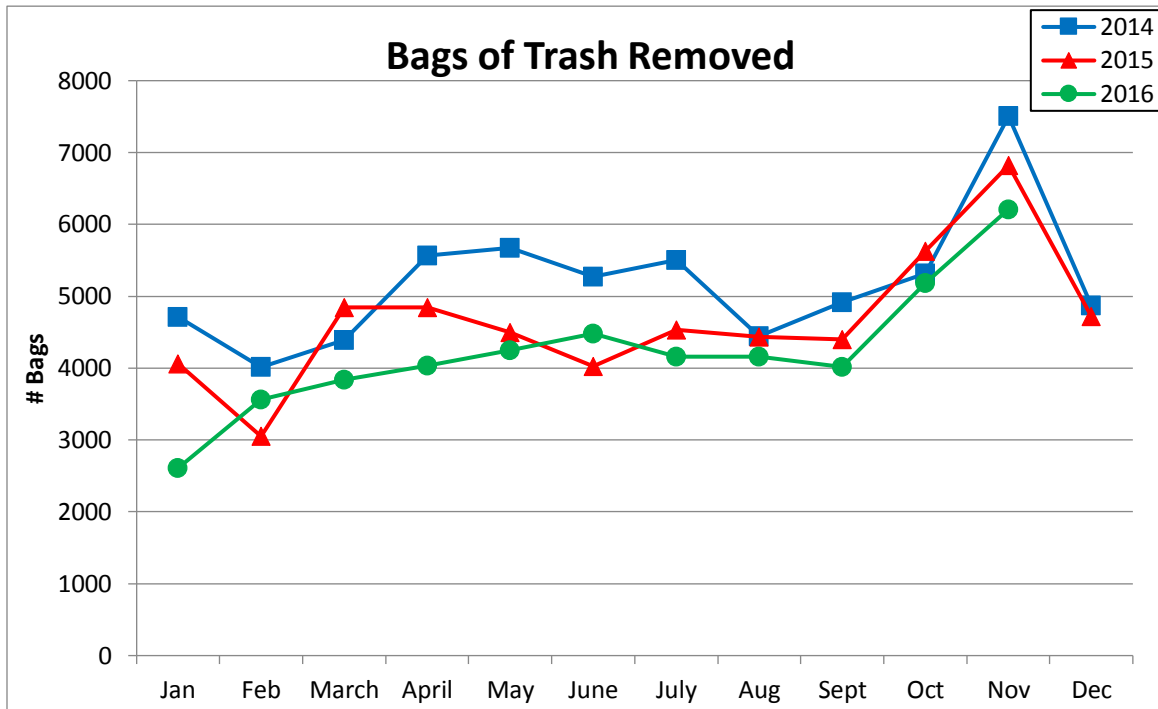
<b>Rat Abatement Program</b>			
<b>Monthly Statistical Report</b>			
	Nov	Year to date	Since September 2012
Dead rats removed	<b>7</b>	<b>263</b>	<b>1,908</b>
Bait station inspections	<b>168</b>	<b>1,785</b>	<b>6,390</b>

Bag Count:

Cumulative since January 2016

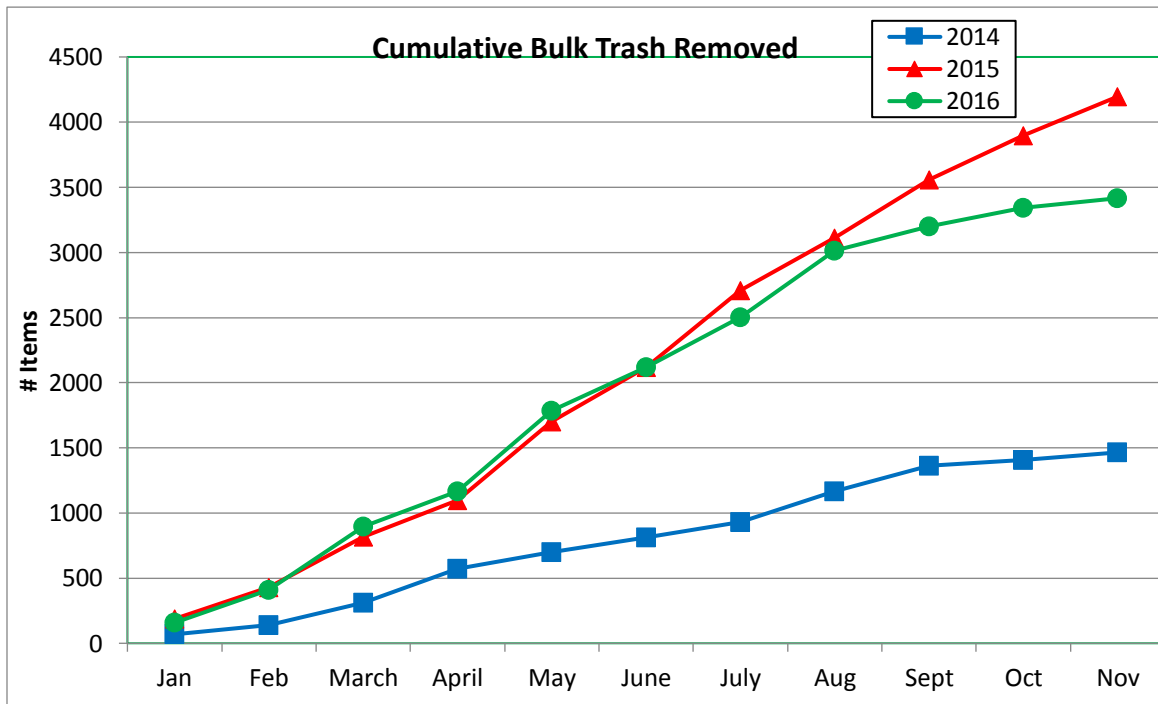


Current month only

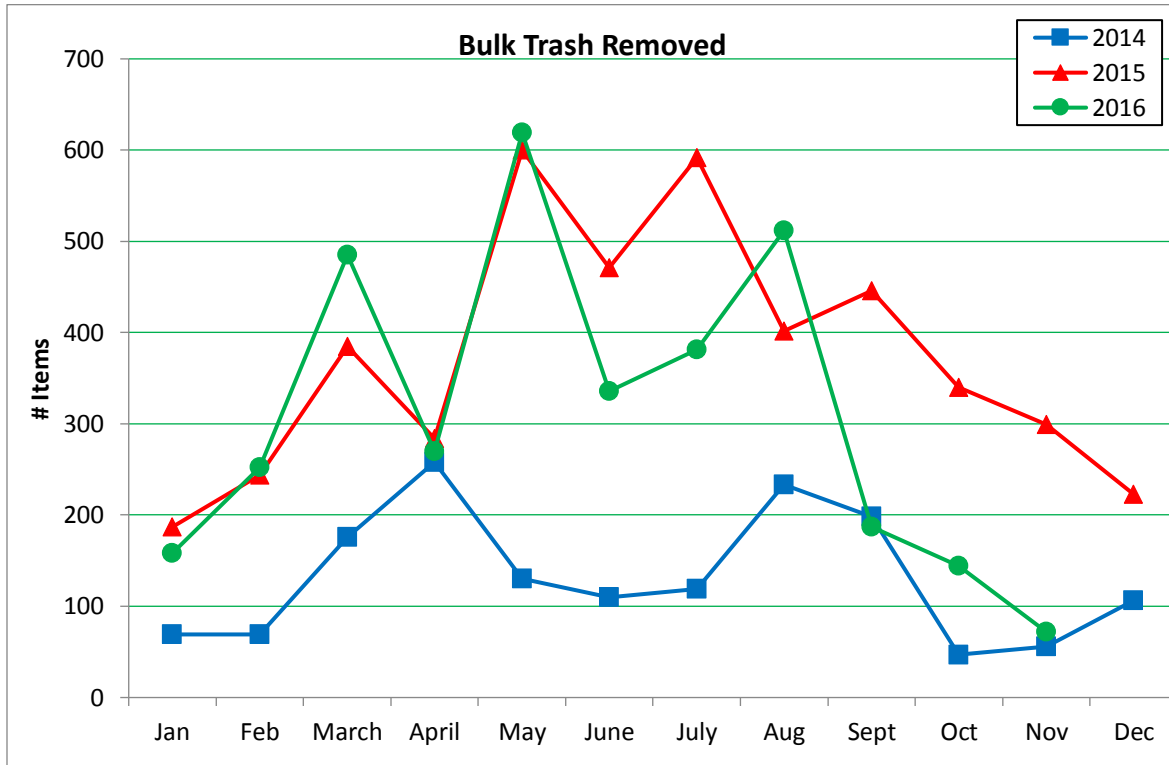


Bulk Trash Count:

Cumulative since January 2016



Current month only



**OUTREACH SERVICES**

- All The Dirt: 1
- Crime Alert: 4
- NextDoor: 0
- Facebook: 50